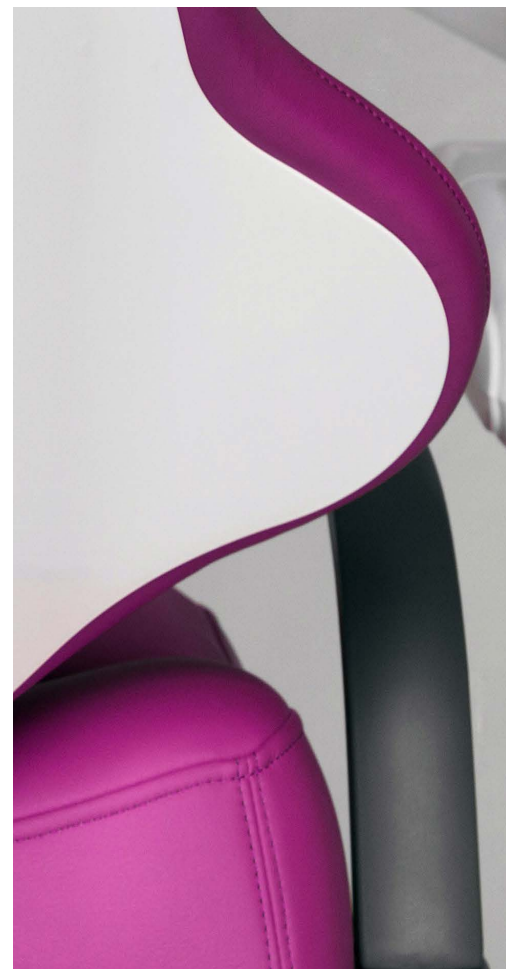


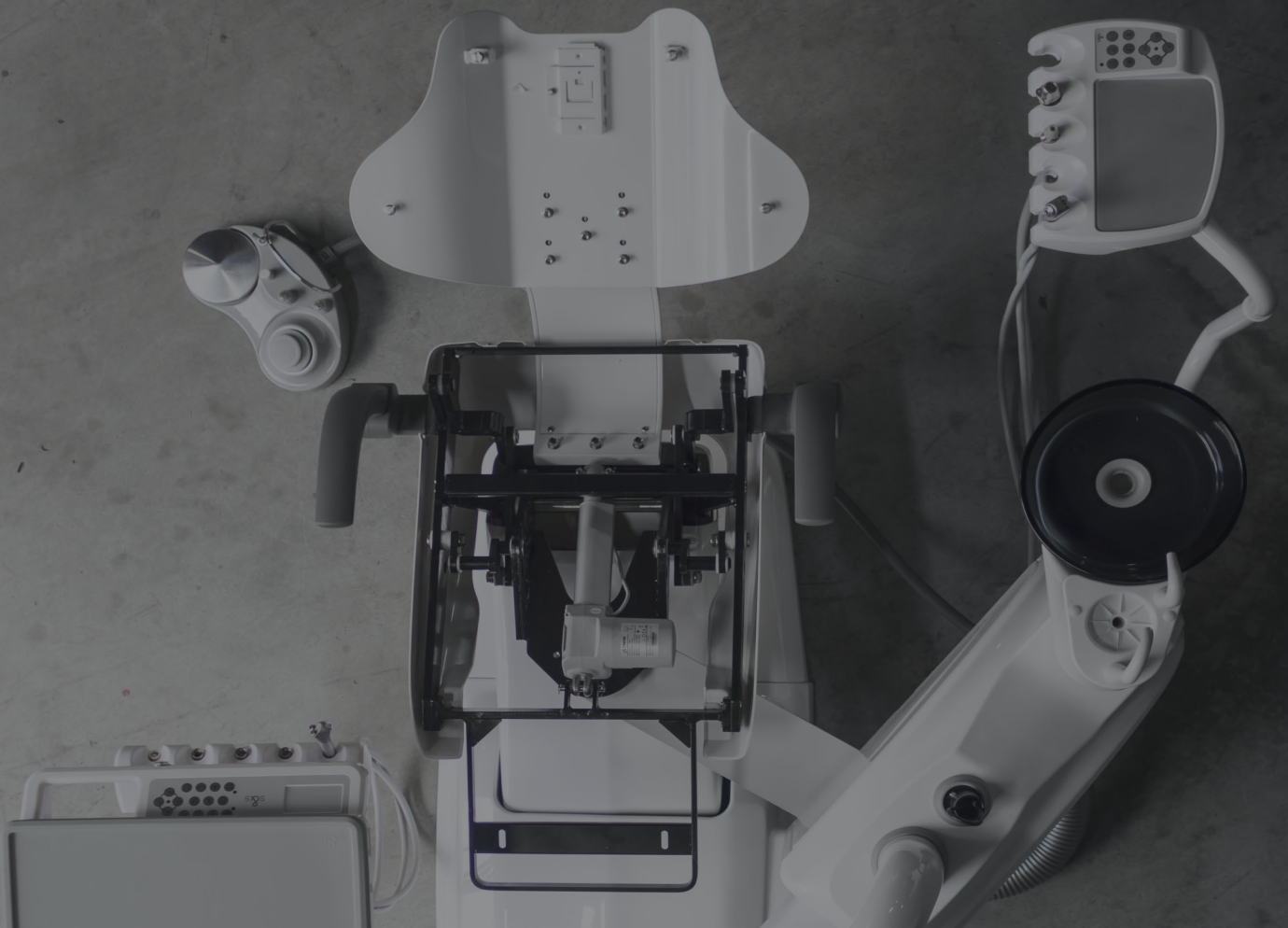
simple&smart

ONE 

A plus in your clinic



**SIMPLE** inside  
**less** assistance need  
easy installation  
**LESS** electronics  
for a **MORE RELIABLE UNIT**  
That's why we are  
**simple&smart**



# 1 CHARACTERISTICS



# CHARACTERISTICS

## COMFY & COZY

improving ergonomics



The **SEAT** and the **BACKREST** have been designed to **improve the patient's comfort and stability** on the chair. The particular ergonomics allows the doctor to work in a more suitable position. Working in 12 o'clock position will be easier.

The structure of the **BACKREST** is in metal and its extra thin design improves the ergonomics of the seat and makes the ap-

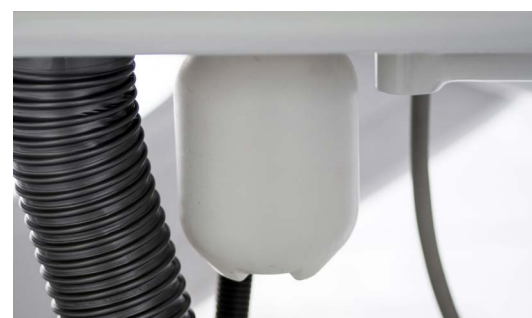
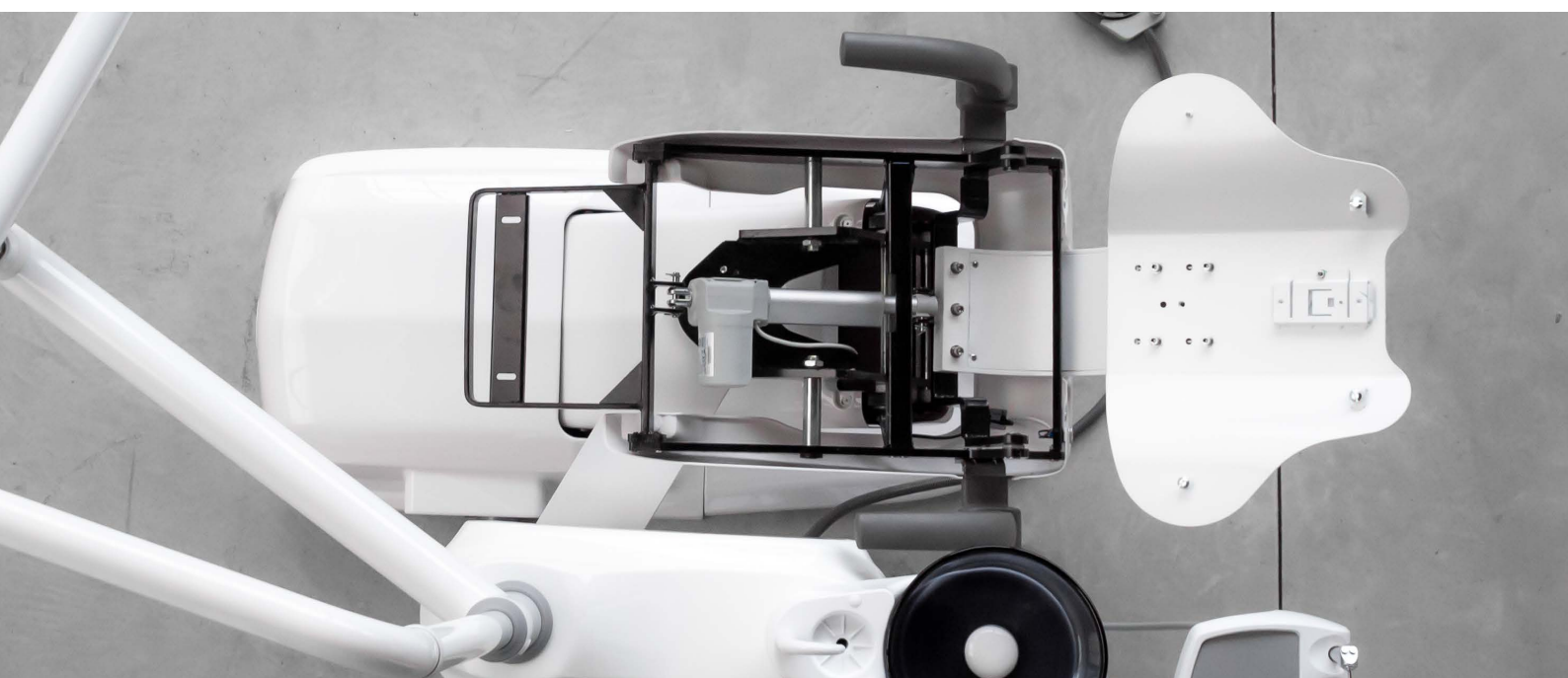
proach of the doctor to the patient much more easier, in this way the doctor can reach a **better working position**.

The design of the **CHAIR BASE** grants a wider movement of the seat. It is thin and allows the chair to reach a **lower position**, to grant a wider working space and improve the doctor's comfort during the daily practice.

# CHARACTERISTICS

## GOOD TO THE BONE

resistent structure, performing features



The structure of the unit is built to last in time, solid and resistant grant a perfect stability and durability.

The **WATER UNIT** can rotate to allow the doctor to work even at 3 o'clock or to allow a better positioning of the assistant. The water unit's internal structure and the most fragile parts of the dental unit are completely made in **aluminum**. This feature allows to reduce the chair weight, making the movement easier to manage. It also avoids the rust formation and grants a greater resistance of those

parts which are most subject to wear. **SS\_ONE** is equipped with **double tanks** for pure water and disinfection system. There is a tank inside the water unit for the disinfection and a second bigger tank, outside the water unit, with a capacity of 2 L for the pure water supply.

There are two separated **airtight filters**, one for each suction cannula.

New, more powerful and less noisy motors are the icing on the cake.

# CONF IGUR ATION



# CONF IGUR ATION

# FIT YOUR SPACE

pick what you need

You can choose which kind of **INSTRUMENT TRAY** is more suitable for you, based on your habits. Also the choice of the **SPITTOON BOWL** is up to you: the dark glass spittoon bowl is removable to simplify the cleaning operation.

## HANGING TYPE



## TOP MOUNTED

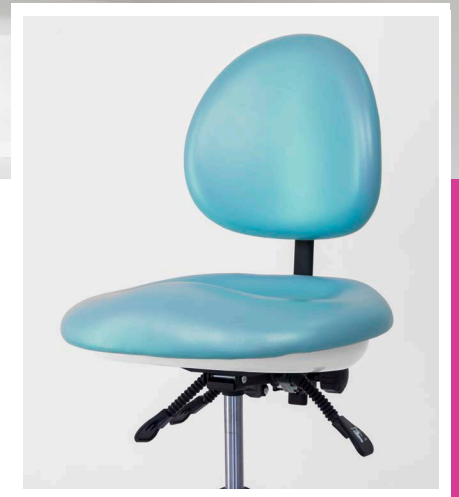


**CERAMIC SPITTOON**



**GLASS SPITTOON**

No matter what you choose,  
there will be no additional costs.



# STANDARD CONFIGURATION

- Ergonomic seat
- 5 cordon modules on doctor tray:
  - 1 syringe with 3 functions
  - 1 WP scaler, EMS compatible with 5 tips included
  - 3 cordons (2 with optic fibre, 1 without optic fibre) midwest type
- Assistant tray with:
  - 1 syringe with 3 functions
  - double cannula for strong and weak suction
- 15 function control panel on doctor tray
- 10 function control panel on assistant tray
- 3 programmable positions + reset position + last position
- X-ray viewer
- Multifunctional pedal
- Rotatable white ceramic or dark glass spitton
- Rotatable water unit
- Silicone, autoclavable pads for trays
- Double tank for pure water system (2 L) and disinfection system
- Led eco lamp with sensor, 30.000 lux
- 1 left armrest
- Cushions in high quality PU leather, anti snatch
- Doctor stool in PU leather with 3 adjustable positions
- Installation available also for left-handed doctors



CUS  
TOM  
IZE

your  
dental  
unit



CUS  
TOM  
IZE

EXPRESS YOURSELF

you ask - we do



Our dental units can be equipped, according to your needs, with the **addition of many options.**

The internal simplicity of the machine remains the same but, following your requests, **we can customize your unit in order to make it perfect for you!**

Your experience and feedbacks help us to constantly improve our unit and

find the best solution in any situation.

We have a special team which can fulfill these requests that lie outside the standard production process. Therefore it is possible to adjust ergonomic and functional aspects of the unit according to your requests.

**If you have a wish, we try to make it real!**

# OPT ION ALS

## accessories

lamps  
media kit  
handpieces  
micromotors  
valves  
instruments cart  
maintenance



## FIBER LEATHER

More comfort with seams! The standard cushions in PU Leather are manufactured without seams as they can be cleaned more easily. On the other hand, the Fiber Leather seat grants and **higher sense of comfort** to your patients. There is a standard range of colors but you can also customize it choosing within a range of more than 200 colors.

## EXTRA STOOL

An extra stool can be suitable for your assistant. Different colors are available to meet your requests and your needs.



## RIGHT ARMREST

The right armrest is not included in the standard configuration as many doctors prefer not to have it. But, if you want to increase the comfort of your patients, you can add it to your customized chair.

# OPTIONALS

accessories  
**lamps**  
media kit  
handpieces  
micromotors  
valves  
instruments cart  
maintenance

## ECO LED PEBBLE

Equipped with sensor for intensity regulation. The intensity of this lamp can reach 30.000 lux. Easy to clean and with a pleasant design, this lamp is the perfect example of excellent value for money.



## LED LAMP EVA

High quality LED lamp - Illuminating power from 3.000 to 50.000 lux. You can select the ideal color temperature for dental practice: 5700K, 5000K, 4000K, and 2700K. The patented, unique, reflected-light optical design ensures a well-defined light spot, preventing glare for patients. Its 3D head rotation > 360° allows to illuminate every corner of the mouth.

Made by **FARO** - Italy



## LED LAMP MAIA

High quality LED lamp, from 8.000 to 35.000 lux. Maia is the ideal choice for all dentists searching for a professional LED lamp, a reliable solution, long lasting and with high-level lighting performance at a competitive price. The accurate definition of the MAIA dental lamp luminous spot eliminates the risk of glare, safeguarding the eyes of patients and medical team.

Made by **FARO** - Italy



# OPTIONALS

accessories  
lamps  
**media kit**  
handpieces  
micromotors  
valves  
instruments cart  
maintenance

## ENDOSCOPE KIT

- **Monitor** 24 V, color, 15", with glass protection
- **Intraoral USB Camera:** High definition, auto focus and mouse, LED illumination - by simple&smart Italy
- **Arms Set** for monitor installation

**MONITOR and CAMERA** are installed on the dental unit with a special pole set. The camera has an USB connection and allow to save images on a SD memory card. This high definition camera (1280 x 720) is equipped with autofocus and mouse, LED illumination with 3 different intensity levels. The head of the camera can rotate 280 °, this feature facilitates your job and reduces discomfort for the patient. The Endoscope KIT is the PERFECT SOLUTION to show to your patients your work in real time.



## SUPERMEDIA KIT



- **Panel PC** Installed on the unit, touch screen, wireless mouse and keyboard.
- **USB Camera** Connected to the panel PC  
Made by CARESTREAM - France
- **Arms Set** for monitor installation

**PANEL PC** and **CAMERA** can be installed also separately, but the BEST SOLUTION is to use them together. The PC is touch screen and it works as a normal computer. Internet connection, RVG system, endocamera and all management programs can be controlled directly from your operation site. The combination with the camera allows to get and save all images you need.

# OPTIONALS

accessories  
lamps  
media kit  
**handpieces**  
micromotors  
valves  
instruments cart  
maintenance



## LUZZANI SYRINGE

Straight or curved  
3 or 6 functions



## TKD HIGH SPEED TURBINE

With or without light



## TKD RAPID COUPLING FOR HIGH SPEED TURBINE

KAVO / Bien Air compatible



### STRAIGHT

1:1

TKD

Without light



### BLUE

1:1

TKD

With or without  
light



### RED

1:5

TKD

With or without  
light



### BLUE

1:5

W&H

With or without  
light



### RED

1:5

W&H

With or without  
light

# OPTIONALS

accessories  
lamps  
media kit  
**handpieces**  
micromotors  
valves  
instruments cart  
maintenance



## WOODPECKER SCALER

With light  
EMS compatible  
Satelec compatible on request



## TKD SCALER TITANUS

With or without light  
EMS compatible  
Satelec compatible on request



## WOODPECKER CURING LIGHT

With cable on assistant tray



## TKD KIT MOON CURING LIGHT

6 curing programs, high-power LED light, straight or pistol position. Lamp with a @8mm optical fibre (@5mm optical fibre also available for higher output power).

# OPTIONALS

accessories  
lamps  
media kit  
handpieces  
**micromotors**  
valves  
instruments cart  
maintenance

The instrument tray can be equipped with **one or more micromotors**. Micromotors can be pneumatic or electric depending on the requirements of each customer. **All contrangles, from all brands, can be adapted on these two micromotors.**

## TKD PNEUMATIC MICROMOTOR



Pneumatic micromotor without light, 20.000 rpm. Internal spray. The pneumatic micromotor can be directly applied to the cordon without any control board. Speed can be controlled through pedal or manually on the handpiece.

## TKD ELECTRIC MICROMOTOR

Definitive LED model.  
With light, internal spray, brushless system, 40000 rpm.  
If no control panel is selected, the speed of the micromotor is managed simply through the pedal. The revers control is manual. There is no digital torque control.





# OPTIONALS

accessories  
lamps  
media kit  
handpieces  
**micromotors**  
valves  
instruments cart  
maintenance

## CONTROL PANELS FOR ELECTRIC MICROMOTORS

If you want to have a **greater control of the micromotor** you can choose between two control panels, analog or digital. Both panels can also control two electric micromotors.

### TKD LCD DIGITAL DUOPAD

The digital panel allows you to control the speed, torque, rotation and light of the micromotor. The controls are digital and take place through the dedicated touch screen panel. With this solution it is not possible to have more memory usage



### TKD ANALOGIC DUOPAD WITH BUTTONS

The analog panel allows the same controls as the digital one, but the analog duopad also provide the possibility of having more memory usage. The advantage of the analog system is the simplicity of selection with buttons.



# OPTIONALS

accessories  
lamps  
media kit  
handpieces  
micromotors  
**valves**  
instruments cart  
maintenance

On all our dental units we install **DÜRR** valves, according to the specific requests of each customer and to the type of suction system present in the clinic. Our dental units are preset by default to be connected to a liquid or wet suction machine.

In addition, it is possible to integrate the unit with:



## 1. CAS1

This valve allows to join all the valves at the following points 2, 3, 4 together. It also has an integrated amalgam separator. This solution is available only for SS\_ONE dental unit.

## 2. CS1 AIR/WATER SEPARATOR

This valve allows to fit the unit for the connection to a dry suction motor.



## 3. PLACE SELECTION VALVE

In case of multiple installations (two units or more connected to a single suction motor).

## 4. SPITTOON BOWL VALVE

To convey the drain of the basin towards the aspirator (in case there is just one tube at the base of the chair).



## 5. VENTURI SYSTEM

To be installed in those situation where there is no suction machine.

It is very important to analyze the situation of the clinic before ordering the unit. **The S&S staff will help you and suggest you the best solution to fit the unit to your system.**

# OPTIONALS

accessories  
lamps  
media kit  
handpieces  
micromotors  
valves

**instruments cart**

maintenance



In replacement to the instrument tray you can have your dental unit with the instrument cart. The cart has the same equipment as the instrument tray:

• **FIVE CORDON MODULES ON DOCTOR TRAY:**

- 1 syringe with 3 functions
- 1 WP scaler, EMS compatible with 5 tips included
- 3 cordons (2 with optic fibre, 1 without optic fibre) midwest type

• **15 FUNCTION CONTROL PANEL**

• **X-RAY VIEWER**

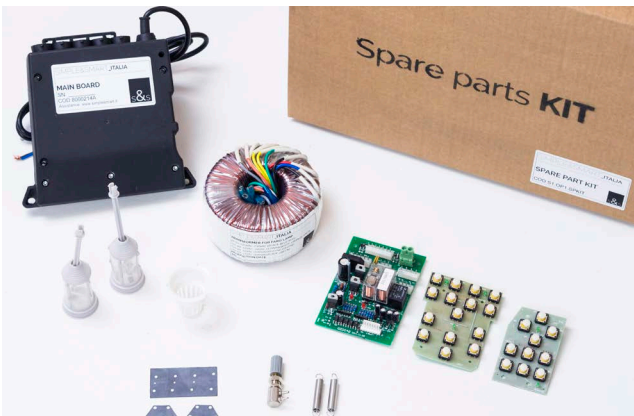
# OPTIONALS

accessories  
lamps  
media kit  
handpieces  
micromotors  
valves  
instruments cart  
**maintenance**

Our aim is to be as fast as possible in assisting you. That's why we have all the spare parts ready for the delivery and they can be shipped within 12 hours from the reception of the request.

In order to be even faster in solving your possible problems, we created **2 SPARE PARTS KITS**. If you keep these kits in your warehouse or clinic, you can solve any possible problem in a short time.

## BASIC SPARE PARTS KIT



- All the electrical boards of the unit (1 main board, 1 transformer, 1 pcb for the water unit, 1 assistant tray pcb, 1 instrument tray pcb).
- 2 exagonal membranes
- 1 rectangular membrane
- 2 suction filters
- 1 basin filter
- 1 regulation valve
- 2 cordon springs

## COMPLETE SPARE PARTS KIT



- All the electrical boards of the unit (1 main board, 1 transformer, 1 pcb for the water unit, 1 assistant tray pcb, 1 instrument tray pcb).
- 4 exagonal and 2 rectangular membranes
- 2 suction filters
- 1 basin filter
- 1 regulation valve
- 2 cordon springs
- 1 weak and 1 strong suction handle
- 2 syringe tips
- 1 optic fiber cord
- 1 assistant tray label + 1 instrument tray label
- 1 bottle for disinfection system
- Set of silicone pads
- 1 tap for basin and 1 tap for glass

# OPTIONALS

accessories  
lamps  
media kit  
handpieces  
micromotors  
valves  
instruments cart  
**maintenance**

## CLEANING KIT

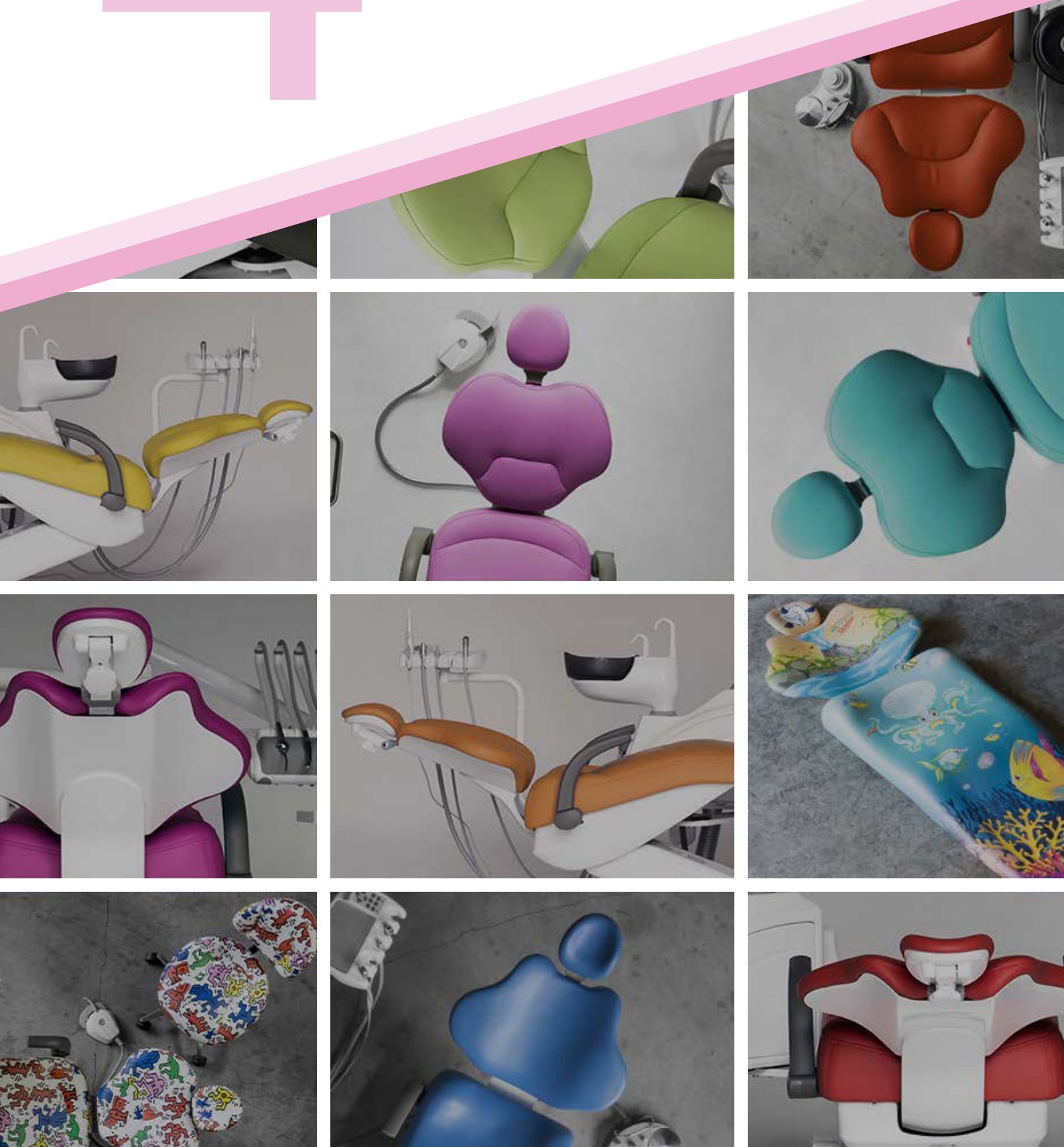


The concept is always the same, to grant the customer the best service possible. The purpose is giving to the customers **all the necessary products for the ordinary maintenance** of our

dental units. Our cleaning kit contains all the most suitable products to clean and sanitize our dental units, filters, silicone parts, etc. that can be replaced in case of need.

- 2 suction filter
- 1 basin filter
- 1 weak suction handle
- 1 strong suction handle
- 1 set of silicon pads
- 1 **puly jet** by Cattani, to clean the suction tubes, kill the bacteria, avoid to have bad smells inside your clinic and avoid any tubes obstruction.
- 1 **aqua plus** to clean all the internal system of the unit through the disinfection system installed inside the unit. It prevents the formation of microfilm inside the tubes and so, any possible damage to the small holes of the instruments.
- 1 **esenfix of microzid** to keep the dental unit surface clean avoiding possible damages to the leather and the sensible plastic parts. It is alcohol free.

# 4 COLOR YOUR CLINIC



# COLOR YOUR CLINIC

## IT'S A MATTER OF LEATHER

seams or no seams, that is the question!

Standard PU, standard Fiber Leather and more than 200 customized colors: S&S has the widest choice of upholstery you have ever seen!

The Pu standard polyurethane upholstery is available with no additional costs. The standard PU leather is seamless for an **easier cleaning procedure**. With a small additional cost you can select the elegant Fiber Leather upholstery, with seams to grant to your patients a **higher comfort**.

## PU LEATHER



## FIBER LEATHER

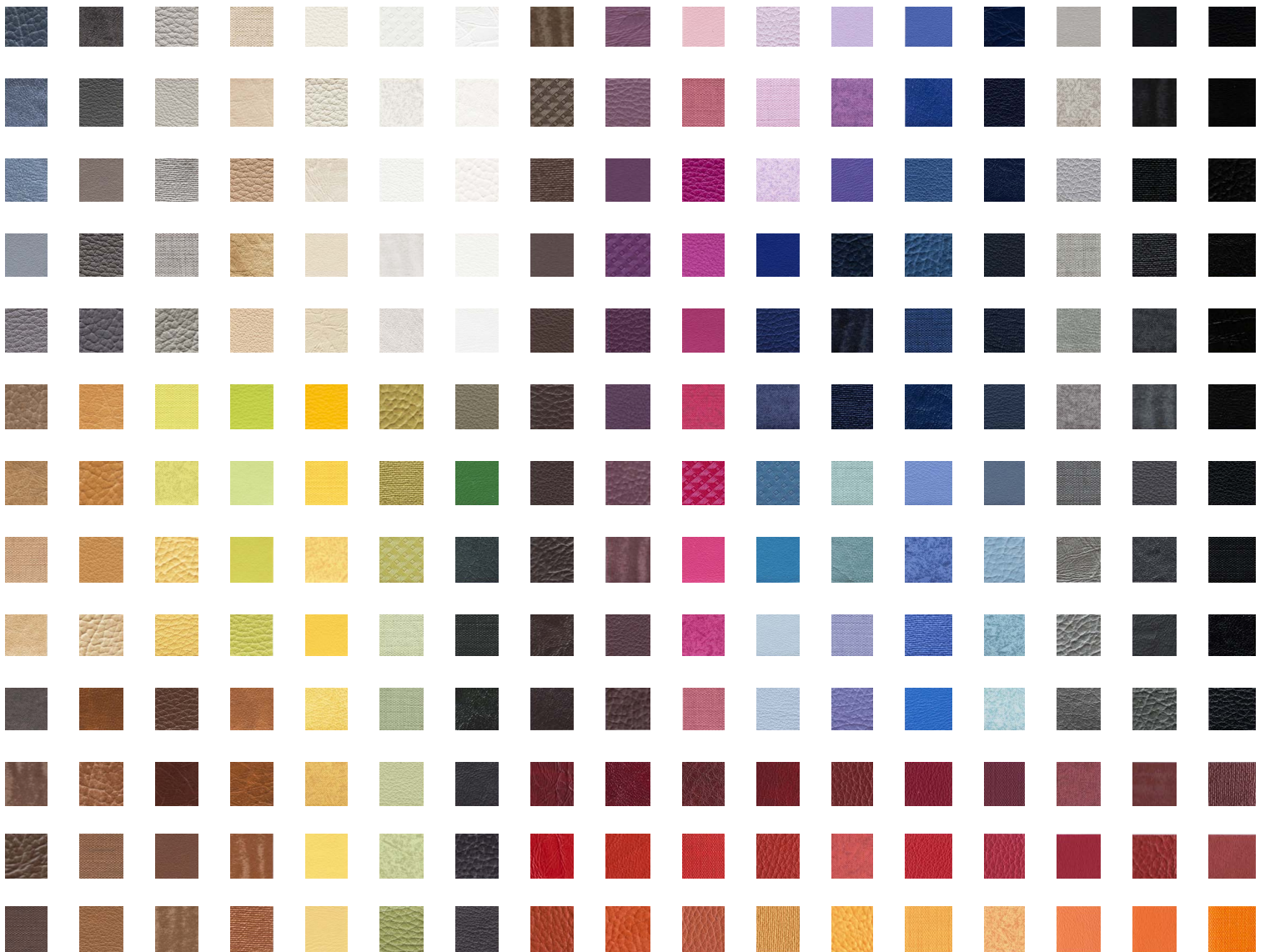


COLOR  
YOUR  
CLINIC

# NO LIMITS

did you say Strawberry Pink?

## CUSTOMIZED LEATHER



Just think about a color, we are sure you can find it in our range of customized colors! With a slightly higher additional cost, you have the possibility to choose from **more than 200 colors**. This kind of upholstery is **Fiber Leather with seams**. Do not set limits to your imagination, you can make your clinic unique!

Impossible not to find your favorite color!



# 5 COMPANY



COM  
PA  
NY

# AT YOUR SERVICE



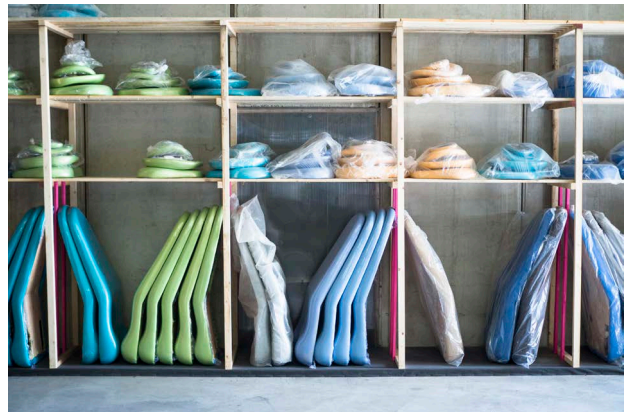
## PRODUCTION

The production process is the heart of our company, and for this reason we follow every stage with particular care, starting from the choice of materials, paints and components, to assembly and final control. Each unit, in fact, is subjected to a careful double check, carried out by our specialized technicians, during assembly phase and before shipment.

Our **ISO 9001** and **ISO 13485** standards testify that these processes are actually carried out and respected.

## STOCK

We want to be extremely **fast in deliveries**, so we always have in stock several units, in large part already assembled and ready to be configured according to our Customers needs. All the necessary parts and all the options are **available in stock** and we can complete the assembly of the unit and arrange the delivery in a few days.



## SHIPMENT

The shipment can be arranged according to each customer's needs. We usually ship the unit in a **single wooden case**, but, if required, we can ship the unit in two separated boxes, in order to make the delivery to the clinics easier. The **two separated wooden cases** are smaller in size and less heavy, so the download from the truck is easy even without a lifter and the reduced dimensions allow an easy storage while waiting for the installation.

## WARRANTY EXTENSION

The standard warranty on our dental units covers a period of **1 year** but, if you want, you can extend the warranty **up to 5 years**.

## WATCH OUR VIDEOS

On our **website** and on our **YouTube** page you can find many videos of the unit, on its configuration, on the options available, tutorial videos for the installation, maintenance, sanitization, etc., in order to set up and take care of your chair in the best way possible.

## [www.simplesmart.it](http://www.simplesmart.it)

We created this website to support our dealers and customers in the best way possible. You can have a complete overview on our company and our products, you can even configure your customized unit. Using our **configurator** you can receive a personalized quotation without any purchase obligation.

With Simple&Smart you can always find the best and simplest solution for your needs.

Follow our social media pages to discover more and to be updated on our news, products and events.

## LIVE ASSISTANCE

**WhatsApp** number on request if you are our dealer.

We are **always at your disposal**. You just have to contact our live assistance department on **Whatsapp**. Our technical staff will assist your technicians to solve your problem in few minutes.

## REPORTS ON FILES

Complete **PDF reports** are available to be sent by email. Detailed information for **problem solving** are explained in a specific manner on the bases of the problem you have indicated.



COM  
PA  
NY

# CERTIFICATES

we take it seriously

## ISO & CE CERTIFICATES

Our dental units are Class IIa medical devices. The **EC Certificate** and **ISO 13485 Certificate** ensure that our products and procedures are compliant to the regulations in force and to the severe ISO standards. **These certifications guarantee the quality of our products and services.**



## CERTIFIED TECHNICIANS



To ensure a perfect installation and a proper after sales assistance service, Simple&Smart certifies all the distributors' technicians, after attending a **specific training**. An Enabling Certificate is issued to the technician. All this, in order to **provide a safe and reliable product** to the customers and a professional and precise technical support.



 **simple&smart**

**Registered office:** Via Perola 16, 24021 Albino, Bg - Italy

**Headquarters:** Via San Carlo 33/35, 24029 Vertova, Bg - Italy

**Ph:** +39 (0)35 5295636 | [info@simplesmart.it](mailto:info@simplesmart.it) | [www.simplesmart.it](http://www.simplesmart.it)

